



Stunning penthouse apartment next to the ski slope

Price : 1 500 000 €

Reference 4090

Morzine

Apartment

Bedrooms 4

Bathrooms 4

Floors 2

Habitable Area 163.45 m²

DPE Energy Rating B

Gas Rating A

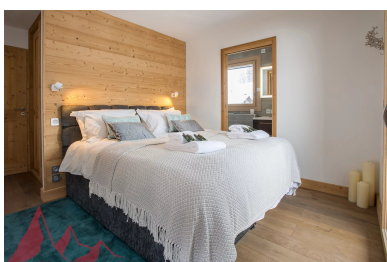
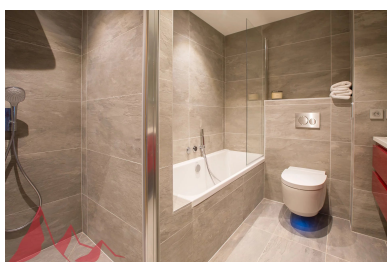
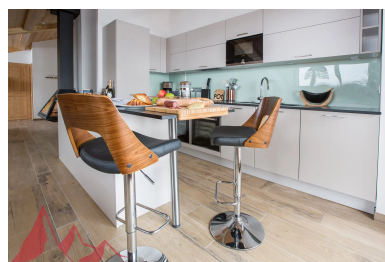
Description

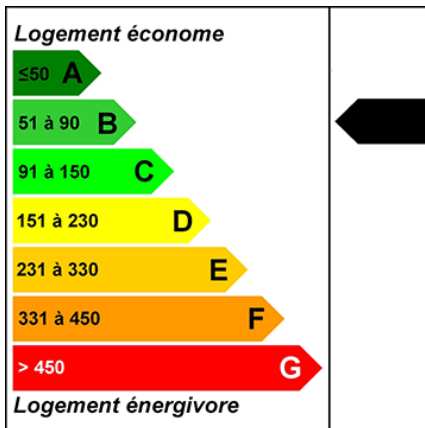
Completed in 2018, Les Chalets Joux Plane is an exclusive development of luxury apartments in Morzine. The residence is in a prime location just opposite the Pleney slopes, with the shops and restaurants of town on your doorstep. Experience the Ultimate Alpine Escape: Your Dream Morzine Penthouse Awaits! Step into luxury with this stunning two-floor penthouse, perfectly positioned in the heart of Morzine. Boasting four spacious bedrooms, each with its own ensuite bathroom, this property offers unparalleled comfort and privacy. Ideal for families or groups, it's the perfect base for your Alpine adventures.

Prime Location, Unbeatable Convenience Situated in the vibrant center of town, you're just steps away from Morzine's finest bars, restaurants, and shops. Savor the lively après-ski scene or indulge in gourmet dining—all within easy walking distance. And for ski enthusiasts, it doesn't get better than this: the penthouse is directly opposite the highly anticipated new ski lift to the Nyon Plateau, providing seamless access to world-class slopes. Breathtaking Views Wake up to panoramic vistas of snow-capped peaks and the charming village below. The expansive windows and private balconies offer a front-row seat to Morzine's stunning natural beauty, creating an ambiance of serenity and inspiration. Luxury Meets Functionality Designed with style and practicality in mind, the penthouse features a modern open-plan living space, perfect for entertaining or relaxing by the fire after a day on the slopes. High-end finishes and top-of-the-line appliances ensure every detail exudes sophistication. Whether you're looking for a luxurious holiday retreat or a smart investment in one of the Alps' most sought-after locations, this penthouse is a rare opportunity. Don't miss your chance to own a slice of Morzine paradise—schedule a viewing today and prepare to fall in love! Salient points

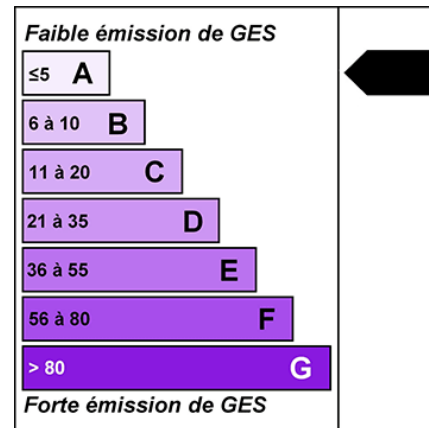
- Sleep 8 to 10 people
- Large open plan living area with vaulted ceilings
- Amazing panoramic views
- South facing exposure
- 4 bedrooms ensuite
- secure parking, garages
- cave and ski locker

Contact us for more information at contact@morzine-immo.com Information on the risks to which this property is exposed is available on the Géorisques website <http://www.georisques.gouv.fr>





DPE/Energy consumption:
87KWhEp/m2.an



GES/Greenhouse gas emission:
26KgéqCO2/m2.an

Important Notice

Morzine Immobilier, their clients and any joint agents give notice that:

- (1) They are not authorised to make or give any representations or warranties in relation to the property either here or elsewhere, either on their own behalf or on behalf of their client or otherwise
- (2) These particulars do not form part of any offer or contract and must not be relied upon as statements or representations of fact. They assume no responsibility for any statement that may be made in these particulars.
- (3) Photos etc: the photographs show only certain parts of the property as they appeared at the time they were taken. Any areas, measurements or distances are approximate. The text and plans are for guidance only and are not necessarily comprehensive.
- (4) Regulations :It should not be assumed that the property has all the necessary planning, building regulation or other consents and Morzine Immobilier have not tested any services, equipment or facilities. Purchasers must satisfy themselves by inspection or otherwise.